

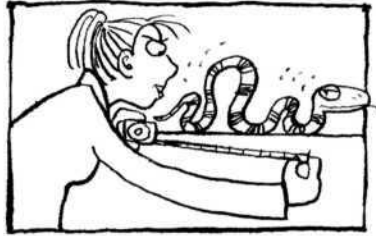
## 1 Key vocabulary *How long is it?*

What are these people thinking? Write questions with *How* + adjective + *is it?*

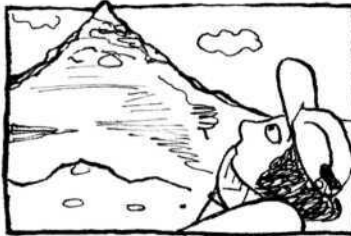
long old ~~tall~~ high far dangerous



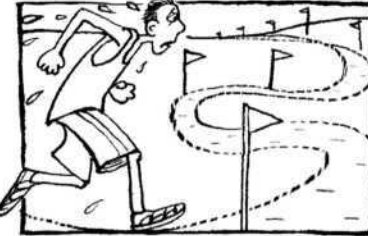
1 *How tall is it?*



2 \_\_\_\_\_



3 \_\_\_\_\_



4 \_\_\_\_\_



5 \_\_\_\_\_



6 \_\_\_\_\_

## 2 Adjectives: comparatives and superlatives

22a, 22b, 22c

Complete the table.

1 long	_____ <i>longer</i> _____	the longest
2 _____	bigger	the biggest
3 difficult	more difficult	_____
4 easy	easier	_____
5 powerful	_____	the most powerful
6 hot	_____	_____
7 important	_____	_____

## 3 Superlatives

Complete the sentences. Use the superlative form of the adjectives in the box.

lazy long heavy ~~large~~  
popular tall big

- Jupiter is the largest planet in the solar system.
- A giraffe can be 5.8 metres tall. It's the animal in the world.
- A blue whale can be 30 metres long and can weigh 150 tonnes. It's \_\_\_\_\_ and \_\_\_\_\_ animal in the world.
- \_\_\_\_\_ animal in the world is the koala. It sleeps for 18–22 hours a day!



- Chloe is \_\_\_\_\_ girl's name in Britain.
- The First World Hotel in Malaysia has got 6,300 rooms. It's \_\_\_\_\_ hotel in the world.